



East Arbour Street, London, E1

BUTLER  STAG





**Guide Price - £550,000 to £600,000**

**Spanning almost 900 sq. ft., this exceptional two-bedroom split-level apartment forms part of the iconic Whittingham Apartments, a beautifully restored Victorian police station that blends rich history with contemporary living.**



## Leasehold

- Two Double Bedrooms
- Nearly 900 sq. ft. Of Living Space
- Communal Private Parking
- Contemporary Kitchen & Stylish Interiors
- Two Bathrooms
- Converted Victorian Police Station
- Original Exposed Brickwork & Large Period Windows
- Prime East Arbour Street location

From the moment you step inside, the apartment impresses with its sense of character and charm. Original exposed brickwork, soaring ceilings, and grand Victorian windows flood the interiors with natural light, creating an inviting atmosphere that perfectly balances period detail with modern comfort.

The accommodation is thoughtfully arranged over two levels, offering generous proportions throughout. The open-plan living and dining area provides a stylish and versatile space for entertaining, while the well-appointed kitchen features sleek cabinetry and high-quality appliances. Two spacious bedrooms, two bathrooms including an ensuite shower room, each with distinctive features, ensure ample comfort, with the split-level design giving an added sense of privacy and flow.

What truly sets this property apart is its extraordinary heritage. Once serving as the local police station, the building's storied past includes the original cells, reputedly housing none other than the infamous Kray Brothers. Today, this striking conversion offers a rare opportunity to live within a piece of British history.

Situated on East Arbour Street, the apartment enjoys a prime location with easy access to local amenities, waterfront walks, and excellent transport links. Whether as a unique home or a remarkable investment, this apartment captures the perfect blend of history, style, and convenience.







## Whittington Apartments

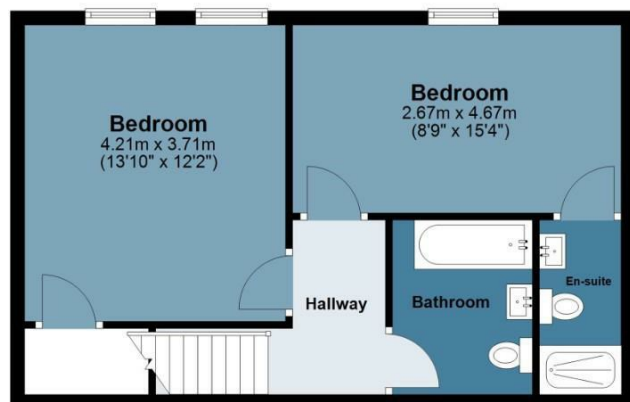
Approx. Gross Internal Area 82.4 Sq M ( 887.4 Sq Ft )

BUTLER & STAG



### Lower Ground Floor

Approx. 44.6 sq. metres (480.5 sq. feet)



### Ground Floor

Approx. 37.8 sq. metres (407.0 sq. feet)



Measurements are approximate and for illustration purposes only. While we do not doubt the accuracy and completeness, we advise you conduct a careful independent assessment of the property to determine monetary value.  
© @modephoto.uk www.modephoto.co.uk

IMPORTANT NOTICE - These particulars have been prepared in good faith and they are not intended to constitute part of an offer or contract. We have not performed a structural survey on this property and the services, appliances and specific fittings have not been tested. All photographs, measurements, floor plans and distances referred to are given as a guide and should not be relied upon.

BUTLER & STAG

☎ 020 8102 1236

🏠 508 Roman Road, Bow, London, E3 5LU

✉ bow@butlerandstag.com

www.butlerandstag.uk